

APRIL 24TH 2021
INAUGURAL AUCTION

HORSESHOE BAY
TEXAS

16:00



AUTHENTIC EXOTICS - SUPERIOR GENETICS



Contact your local Purina® Dealer
for more information or
Wildlife Specialist, Scott Hohensee
at sdhohensee@landolakes.com

**THE BEST FOR ALL YOUR
RANCH ANIMALS**

FEED GREATNESS®



©2021 Purina Animal Nutrition LLC. All rights reserved.



WELCOME TO THE INAUGURAL AUCTION OF STAR S RANCH AND GUEST SELLERS

We want to thank you for your interest in our auction and what we have to offer.

Star S Ranch has been a premier hunting destination in the USA and surrounding countries since its creation in 1996. Over the past 25 years, we have had one goal in mind: to breed excellent trophies for the hunting market. With this goal in mind, we sourced the best genetics available and tailored our breeding programs to look at genetic traits for horn length, genetic diversity, and adaptability of these animals. We have selected animals for the auction based on these traits.

We want to thank our guest sellers and their teams for their consignments. We are sure you will be pleased with the outstanding animals on sale today.

It is with great pleasure we offer you some of our best genetics on the ranch.

Enjoy the day with us, and may you be successful in your bidding!

Sincerely,
The Scott Family

INDEX

- INTRODUCING OUR GUEST SELLERS
- A NOTE FROM PROFESSOR BETTINE VAN VUUREN
- INTRODUCING OUR AUCTIONEER
- PAGE KEY AND EXAMPLE PAGE
- INTRODUCING OUR CHARITY LOT
- HUNTING PACKAGES - LOT 01,11, 46
- IMPALA - LOT 02, 03, 22, 23
- ARMENIAN MOUFLON - LOT 04, 05, 06
- KUDU - LOT 07, 08, 09, 10, 64, 65, 66, 67, 68
- BLESBOK - LOT 12
- RED SHEEP - LOT 13, 14, 15
- SABLE - LOT 16, 17, 18, 19, 36, 37, 53, 54, 55, 56
- HOG DEER - LOT 20, 21
- MARKHOR - LOT 24, 25, 26
- FALLOW DEER - LOT 27, 28, 29, 49, 50
- ARABIAN ORYX - LOT 30, 31
- BONGO - LOT 32
- ALPINE IBEX - LOT 33, 34, 35
- NYALA - LOT 38, 39, 60, 61
- NUBIAN IBEX - LOT 40, 41, 42
- ROAN - LOT 43, 44, 45
- GRANTS GAZELLE - LOT 47, 48A, 48B
- GRÉVY'S ZEBRA - LOT 51, 52
- ELAND - LOT 57, 58, 59
- RED STAG - LOT 62, 63
- CAPE BUFFALO - LOT 69
- RETICULATED GIRAFFE - LOT 70, 71
- RULES OF AUCTION AND TERMS AND CONDITIONS
- A NOTE FOR LIVESTOCK
- DV AUCTIONS TERMS AND CONDITIONS

INTRODUCING OUR GUEST SELLERS



We have been leading the way in the fallow industry since 1998 when Colby started running a fallow meat operation, which he quickly shifted to focus on antler growth.

Now, with over 20 years of a closed herd and being blessed with making the right decisions on breedings, we consistently produce the biggest fallow bucks. Not only do we boast the current SCI world record and numerous other gold medal deer, our breeding stock is highly sought after. We started a new era of excitement in 2015, and took the fallow breeding market to the next level, when we sold our breeder Irish Elk (now known as Thunderstruck). Bullwinkle, who came from our breeding program, also made a splash in 2018.

Our current breeders are a powerhouse group led by Mr Big, Chief, Mighty Moose, Sledgehammer, and Royal. Our younger up and comers are Mpressive War Cry, Geronimo and Legend. We are thrilled with our current 2 and 3 year old crops. Sola Fe Ranch is the ranch to visit if you want to start a herd with the most proven genetics and extensive pedigrees.

This is where all the BIG bucks come from!



Located in Deep South Texas, in the county of Duval, sits the Silverhorn Ranch. The ranch spans over 7,000 acres of brush country. Through years of management and manipulation, the Silverhorn boasts a variety of habitat types that provide an optimal environment for native and exotic species alike.

The Silverhorn Ranch prides itself in operating an animal breeding operation that focuses on high quality animals and customer service. We are raising animals to thrive in the harshest of Texas climates. Silverhorn currently has 7 species of breeding herds which consists of black sable, greater kudu, nyala antelope, gemsbok, axis, blackbuck, and whitetail deer.

The Silverhorn Ranch can provide the quality animals and integrity you are looking for.



Doug Dutschmann and his family moved to Hatada Ranch in 1987.

He has been managing it with the help of his two sons and ranch hand since.

When Hatada was first established it resided on roughly 1,200 acres.

But with hard work and dedication it has grown to approximately 2,000 acres.

Located in Valley Mills Texas, Hatada provides it's 20 plus different species of exotics with the most excellent terrain to keep them healthy and thriving.

We allow our large herds of each species to roam freely through the ranch, plant spring and winter plots along with year round supplemental feeding as well as take part in doing a quarterly worming of all the exotics.

Everyday for over thirty years Hatada has been striving to constantly improve to keep it's animals and overall ranch in top condition.

Hatada prides itself for being a family oriented ranch that specializes in giving you exotics with superior genetics.

DNA - MITOCHONDRIAL AND NUCLEAR

A note from Professor Bettine van Vuuren:

Mitochondria are cellular organelles, outside the nucleus, and are responsible for energy generation in cells. The mitochondrial DNA is inherited through the maternal lineage, with no contribution from the father. Mitochondrial DNA is therefore a good marker to trace female lineages, and provides information about the historical origin of lineages. It can also be used to trace the number of family lineages in a specific area or population. It is the equivalent of male surname transmission in humans.

Nuclear DNA is in the nucleus of cells. It contains coding and non-coding DNA, and is packaged as chromosomes (in antelope, there are typically 60 chromosomes per cell). Nuclear DNA is passed on from both the mother and father; with an offspring related to each parent by 50%, (full siblings are related to one another by 50%). Nuclear DNA provides valuable information about parentage and relatedness, and reflects the membership of a specific individual to different genetic groups (i.e., whether an individual is admixed, or pure within a specific genetic group).

Mitochondrial and nuclear DNA, either singly or in combination, provide valuable information that can assist in the selection process. Various strategies present themselves, but it is crucial that the breeder makes a decision early on in the selection process, and then adheres to it throughout the breeding program; otherwise, there will not be any real progress towards a specific end goal. For example, a breeder may decide that high levels of genetic diversity and variation is crucial in the management of specific herds. It would then be important to maximize the different lineages included in the breeding core, which would include animals from across the range of the species. A typical nuclear result may take the form of 20% Eastern, 50% Zambian, 30% Southern, with mitochondrial membership to any of the genetic groups. At the other side of the breeding-strategy spectrum, a breeder may decide on pure populations. Here, the mitochondrial result will indicate the historical origin of the maternal lineage, while the nuclear result should indicate membership within only a single genetic group, preferably the same group as the mitochondrial result. A typical result may take the form of 90% Zambian, with mitochondrial membership also in the Zambian, or Wes Zambian group (indicating a pure Zambian, or Wes Zambian animal). All, or the overriding majority of animals in the core breeding group, should follow these results. It is important that breeder keep in mind that some calves may show unexpected membership to non-selected groups. This is common and it reflects ancestral polymorphisms, also known as old blood. A grandparent, or even great grandparent, may have had membership to a different group (this is natural, and we even see these results in wild animals naturally occurring in areas).

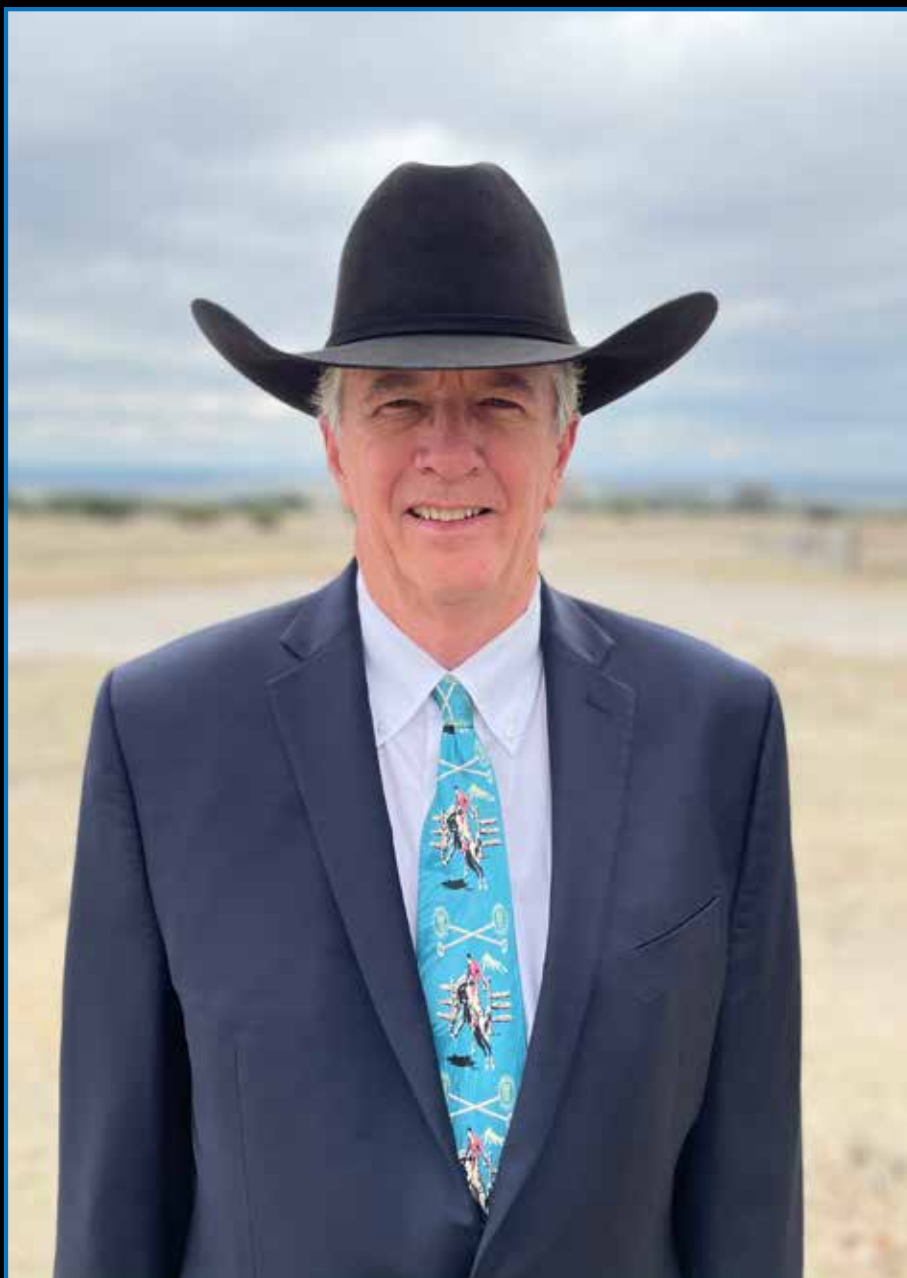


Prof Bettine van Vuuren

📞 +27 (082) 337 4246

✉️ bettinevv@uj.ac.za

🌐 www.molzoolab.co.za



COL. ROLAND "TOOTER" TREES AUCTIONEER

Col. Roland "Tooter" Trees has been an Auctioneer for 30 years. Cattle , sheep, goats, Exotic and domestic game are his areas of expertise. He conducted the first Mohair auction in the U.S. with a gross of 1.2 million. Trees is a graduate of Texas Tech University with a degree in Animal Science. He has judged livestock shows in Australia, Canada, Great Britain, Texas and across the U.S. He and his wife of 33 years, Terri, have two children. A daughter Taitum and son Taos.

ONLINE BROADCAST COURTESY OF



Never Miss An Auction Again! Watch & Bid online
for FREE!

Visit www.DVAuction.com and Register
Today!

For General Questions
Please contact our office:
(402) 316-5460 or
support@dvauctions.com

PAGE KEY

If the Lot states EXAMPLE OF ANIMAL - this images depicts the quality of animal to be purchased, but is not the exact animal

This indicates the Seller of the auction Lot

This is the main image of the Lot

This indicates the Lot number as well as the Lot totals broken down by gender

This is the Lot heading

This provides the information on the auction Lot's animal/animals

This provides the DNA testing results provided by Molzoo Lab (refer to DNA - Mitochondrial and Nuclear page)

This provides more information on the auction Lot's pedigree, parentage and current pregnancy status

This provides the animal's horn measurements

Here any additional information on the Lot is provided

These are additional images relating to the Lot

This is the space provided for you to mark down the sold price on auction day

PAGE EXAMPLE



LOT 18

| | |
|--------|---|
| Male | 0 |
| Female | 1 |
| Total | 1 |

SABLE COW SIRED BY 48^{4/8}" SELOUS XL,
BRED TO 47" LLANO

INFORMATION

| | |
|----------------------|---|
| Species | - Sable |
| Tag no | - S50 |
| DOB | - Jan 15, 2018 |
| Age | - Sub adult |
| Age at auction | - 2y 10m |
| Bloodline / Mito DNA | - Ikkelenge, Kafue and Luangwe, Zambia |
| Nud DNA | - Southern 81% Zambian 15% |
| Sire | - 48 ^{4/8} " Selous XL |
| Bred to | - 47" Llano |
| Exposed to | - Running with 45"+ Savuti |

MEASUREMENTS

| | |
|---------------|---|
| Date measured | - Jan 19, 2021 |
| Horn Length | - L: 25" R: 25" |
| Tip to tip | - 9" |
| Circumference | - L: 7 ^{4/8} " R: 7 ^{4/8} " |
| SCI | - 65" |

ADDITIONAL INFO

An expectational 48^{4/8}" Selous XL daughter,
with excellent genetic backing, good horn
length and exposed to 47" Llano.

\$:

EXAMPLE OF ANIMALS



SIRE 48^{4/8}" SELOUS XL



BRED TO 47" LLANO



EXPOSED TO 45"+ SAVUTI



SERIOUS NUTRITION FOR WHITETAIL AND EXOTICS

Contact us for more information on how we
can help your herd get to the next level.

Bobby Deeds: (325) 451-0030

Gus Duncan: (580) 465-4588





**“THINK OF GIVING NOT ONLY AS A DUTY
BUT AS A PRIVILEGE”**

~ John D. Rockefeller

We are honored to donate all proceeds from our Charity Lot to the Mason County Food Bank. The donation will be used to purchase food for families and individuals in the community who are experiencing food insecurity during this time.

For more information on the Mason Country Food Bank contact
Nanci Gibbons at 210-240-4299

Please take part in bidding on our Charity Lot in order for us to support this worthy cause.



LOT 01

| | |
|--------|---|
| Male | 1 |
| Female | 0 |
| Total | 1 |

CHARITY HUNTING PACKAGE

INFORMATION

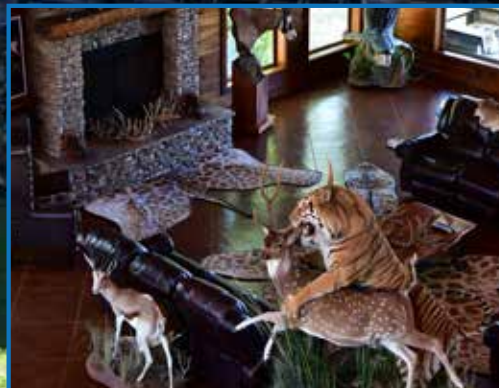
| | | |
|----------------|---|--|
| Species | - | Mouflon and hogs |
| Age | - | Adult |
| Date available | - | Arrange with Star S Management for available dates |

ADDITIONAL INFO

Charity hunting lot consisting of one Armenian Mouflon and hog hunting out of the chopper for one hunter / 2 nights stay and 3 hunting days. All inclusive (1 hour free flying time).

Come out and be treated on a 5 star hunt on Star S Ranch. Experience Africa in Texas!

\$:



EXAMPLE OF ANIMALS



24" SIRE



EXPOSED TO 26"+ RAM



LOT 02

| | |
|--------|---|
| Male | 0 |
| Female | 1 |
| Total | 1 |

**PROVEN IMPALA BREEDING FEMALE SIRED BY
24"+ RAMS AND EXPOSED TO A 26"+ RAM**

INFORMATION

| | |
|----------------------|--------------------|
| Species | - Impala |
| Age | - Adult |
| Bloodline / Mito DNA | - Southern |
| Origin | - Star S Ranch |
| Sire | - 24"+ Impala Rams |
| Exposed to | - 26"+ Impala Ram |
| Date available | - Immediately |

\$:

LOT 03

| | |
|--------|---|
| Male | 0 |
| Female | 1 |
| Total | 1 |

**PROVEN IMPALA BREEDING FEMALE SIRED BY
24"+ RAMS AND EXPOSED TO A 26"+ RAM**

INFORMATION

| | |
|----------------------|--------------------|
| Species | - Impala |
| Age | - Sub adult |
| Bloodline / Mito DNA | - Southern |
| Origin | - Star S Ranch |
| Sire | - 24"+ Impala Rams |
| Exposed to | - 26"+ Impala Ram |
| Date available | - Immediately |

\$:

ADDITIONAL INFO

Stacked genetics at its finest. Well bred impala females with huge genetic potential!

LOT 2 & 3 - IMPALA



LOT 04

| | |
|--------|---|
| Male | 0 |
| Female | 5 |
| Total | 5 |

**EUROPEAN MOUFLON FEMALES
EXPOSED TO VARIOUS 31"+ RAMS.**

INFORMATION

| | | |
|----------------------|---|------------------|
| Species | - | Mouflon |
| Age | - | Adult |
| Bloodline / Mito DNA | - | European Mouflon |
| Origin | - | Star S Ranch |
| Exposed to | - | 31"+ Rams |
| Date available | - | Immediately |

\$:

LOT 05

| | |
|--------|---|
| Male | 0 |
| Female | 5 |
| Total | 5 |

**EUROPEAN MOUFLON FEMALES
EXPOSED TO VARIOUS 31"+ RAMS.**

INFORMATION

| | | |
|----------------------|---|------------------|
| Species | - | Mouflon |
| Age | - | Sub adult |
| Bloodline / Mito DNA | - | European Mouflon |
| Origin | - | Star S Ranch |
| Exposed to | - | 31"+ Rams |

\$:

ADDITIONAL INFO

We have kept our mouflon herd pure over the years, exceptional body color with the saddle patch and good horn shape go's to show.

EXAMPLE OF ANIMALS



EXPOSED TO 31"+ RAMS



LOT 06

| | |
|--------|---|
| Male | 1 |
| Female | 0 |
| Total | 1 |

30" EUROPEAN MOUFLON BREEDING RAM

INFORMATION

| | | |
|----------------------|---|------------------|
| Species | - | Mouflon |
| Age | - | Adult |
| Age at auction | - | 4y |
| Bloodline / Mito DNA | - | European Mouflon |
| Origin | - | Star S Ranch |

MEASUREMENTS

| | | |
|---------------|---|---------------|
| Date measured | - | Dec 10, 2020 |
| Horn Length | - | L: 30" R: 29" |
| Circumference | - | L: 9" R: 9" |
| SCI | - | 77" |

ADDITIONAL INFO

A proven breeder with great horn shape and color with a beautiful white saddle patch. Everything your looking for in a breeder.



30" BREEDING RAM

\$:

LOT 6 - MOUFLON

STAR S RANCH KUDU BREEDING BULLS



58"+ WIDEMAN



63"+ CURLY BILL



58" RAGNOR



62" DEEP CURL



EXTRA WIDE





LOT 07

| | |
|--------|---|
| Male | 0 |
| Female | 2 |
| Total | 2 |

**PROVEN BREEDING COWS EXPOSED TO
58"+ WIDEMAN, WITH A 56" SPREAD**

INFORMATION

| | |
|----------------------|-------------------------------------|
| Species | - Kudu |
| Age | - Adult |
| Bloodline / Mito DNA | - Greater Kudu |
| Origin | - Star S Ranch |
| Exposed to | - 58"+ Wideman with a 56" Spread |

ADDITIONAL INFO

Some of the best Kudu genetics in the
USA, proven breeders who has produced
exceptional offspring.

Blue tag cows will be captured.

\$:

EXAMPLE OF ANIMALS



EXPOSED TO 58"+ WIDEMAN

LOT 7 - KUDU



EXPOSED TO 63"+ CURLY BILL



LOT 08

| | |
|--------|---|
| Male | 0 |
| Female | 2 |
| Total | 2 |

PROVEN BREEDING COWS EXPOSED TO 63"+ CURLY BILL

INFORMATION

- Species - Kudu
- Age - Adult
- Bloodline / Mito DNA - Greater Kudu
- Origin - Star S Ranch
- Exposed to - 63"+ Curly Bill

ADDITIONAL INFO

Some of the best Kudu genetics in the USA, proven breeders who has produced exceptional offspring.

Blue tag cows will be captured.

\$:



LOT 09

| | |
|--------|---|
| Male | 0 |
| Female | 1 |
| Total | 1 |

KUDU COW EXPOSED TO A 63"+ BULL INFORMATION

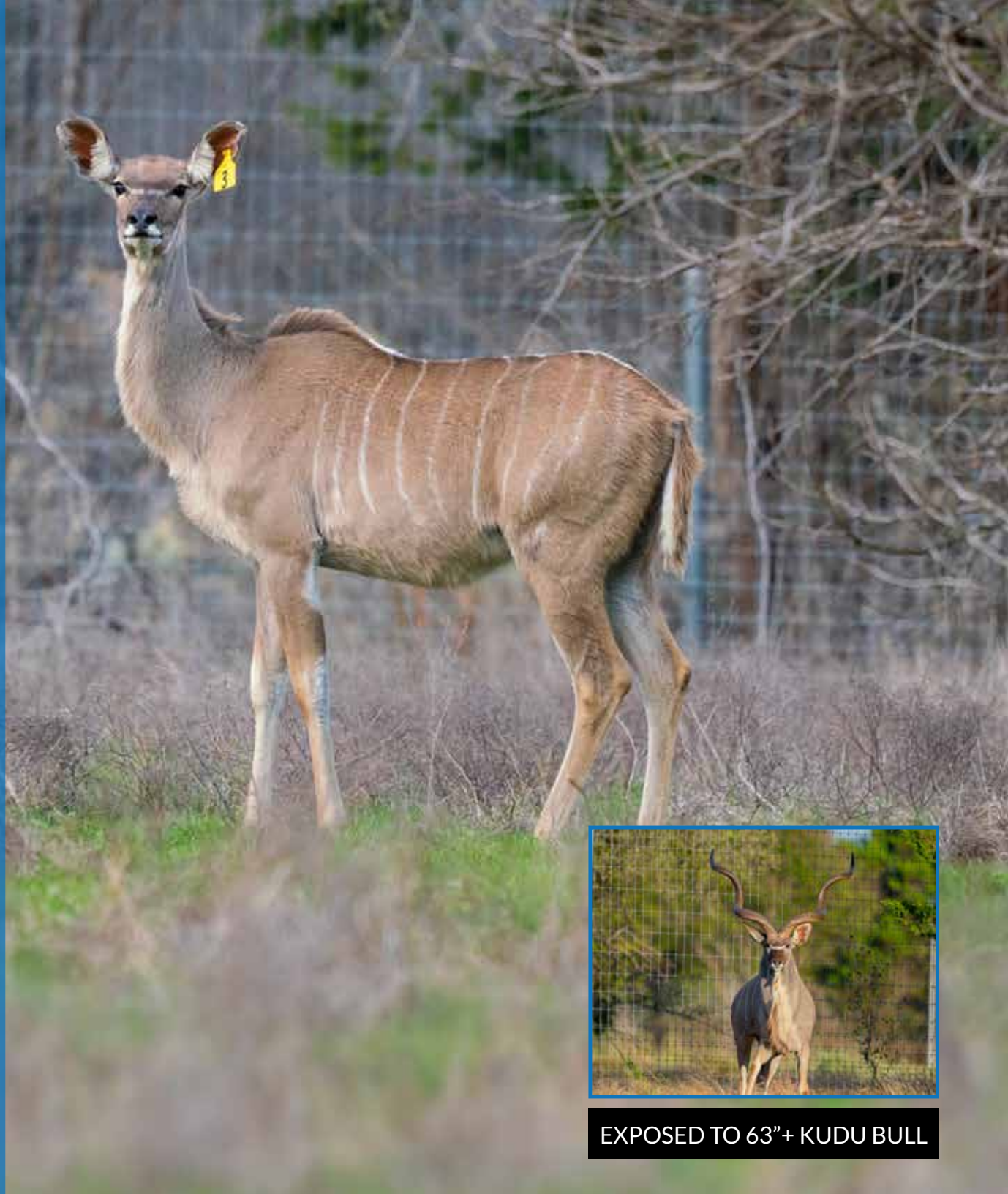
| | |
|----------------------|----------------------------|
| Species | - Kudu |
| Tag | - Y3 |
| Age | - Adult |
| Bloodline / Mito DNA | - Greater Kudu |
| Origin | - Hatada Ranch |
| Exposed to | - 63"+ Excellent Kudu bull |
| Date available | - Immediately |

ADDITIONAL INFO

Exceptional Kudu cow exposed to a 63"+ bull.

Proven and superior genetics, born and raised on
Hatada Ranch in a free roaming environment.

\$:



EXPOSED TO 63"+ KUDU BULL

LOT 09 - KUDU



EXPOSED TO 63"+ KUDU BULL



LOT 10

| | |
|--------|---|
| Male | 0 |
| Female | 1 |
| Total | 1 |

KUDU COW EXPOSED TO A 63"+ BULL INFORMATION

| | |
|----------------------|----------------------------|
| Species | - Kudu |
| Tag | - Y5 |
| Age | - Adult |
| Bloodline / Mito DNA | - Greater Kudu |
| Origin | - Hatada Ranch |
| Exposed to | - 63"+ Excellent Kudu bull |
| Date available | - Immediately |

ADDITIONAL INFO

Exceptional Kudu cow exposed to a 63"+ bull.

Proven and superior genetics, born and raised on Hatada Ranch in a free roaming environment.

\$:

LOT 10 - KUDU



LOT 11

| | |
|--------|---|
| Male | 3 |
| Female | 0 |
| Total | 3 |

STAR S RANCH SHEEP SLAM

INFORMATION

| | | |
|----------------|---|--|
| Species | - | Mouflon, Auodad and Red Sheep |
| Age | - | Trophy |
| Date available | - | Arrange with Star S Management for available dates |

ADDITIONAL INFO

Trophy hunting package consisting of a Mouflon, Auodad and Red Sheep for 1 hunter / 2 nights stay and 3 hunting days.

Come out and be treated on a 5 star hunt on Star S Ranch. Experience Africa in Texas!



\$:



LOT 12

| | |
|--------|---|
| Male | 1 |
| Female | 1 |
| Total | 2 |

BLESBOK BREEDING PAIR

INFORMATION

| | | |
|----------------|---|--------------|
| Species | - | Blesbok |
| Age | - | Yearling |
| Age at auction | - | 12m |
| Origin | - | Hatada Ranch |
| Date available | - | Immediately |

ADDITIONAL INFO

Proven and superior genetics, born and raised on Hatada Ranch in a free roaming environment.

\$:

LOT 12 - BLESBOK



LOT 13

| | |
|--------|---|
| Male | 0 |
| Female | 5 |
| Total | 5 |

RED SHEEP FEMALES EXPOSED TO VARIOUS 35"+ RAMS

INFORMATION

| | |
|------------|----------------|
| Species | - Red Sheep |
| Age | - Adult |
| Origin | - Star S Ranch |
| Exposed to | - 35"+ rams |

ADDITIONAL INFO

Proven breeding females ready for your ram.

\$:

LOT 14

| | |
|--------|---|
| Male | 0 |
| Female | 5 |
| Total | 5 |

RED SHEEP FEMALES EXPOSED TO VARIOUS 35"+ RAMS

INFORMATION

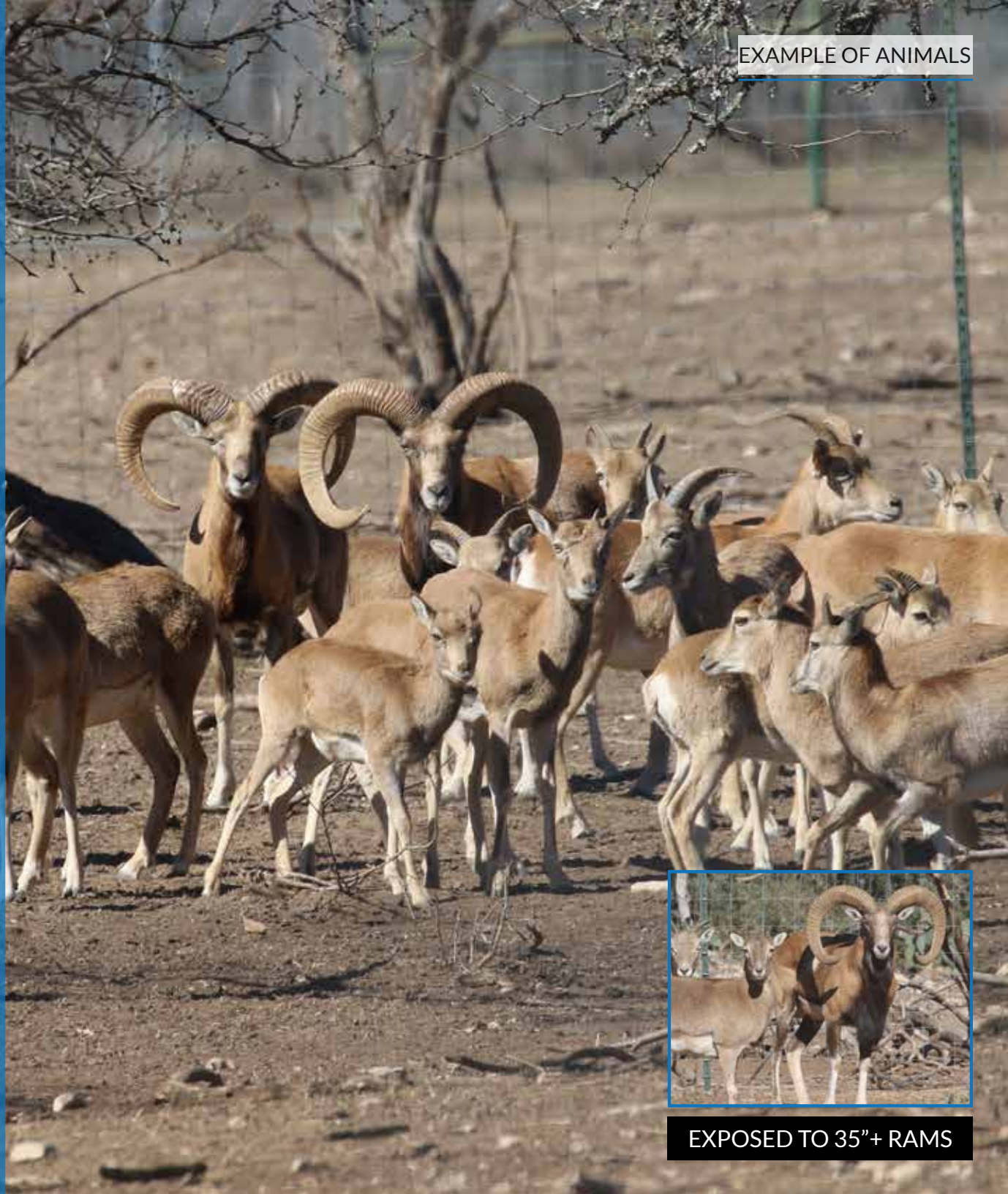
| | |
|------------|----------------|
| Species | - Red Sheep |
| Age | - Sub adult |
| Origin | - Star S Ranch |
| Exposed to | - 35"+ rams |

ADDITIONAL INFO

Young females ready for your ram.

\$:

EXAMPLE OF ANIMALS



EXPOSED TO 35"+ RAMS



LOT 15

| | |
|--------|---|
| Male | 1 |
| Female | 0 |
| Total | 1 |

31" RED SHEEP BREEDING RAM

INFORMATION

| | | |
|----------------|---|--------------|
| Species | - | Red Sheep |
| Age | - | Adult |
| Age at auction | - | 4y |
| Origin | - | Star S Ranch |

MEASUREMENTS

| | | |
|---------------|---|---------------|
| Date measured | - | Dec 10, 2020 |
| Horn length | - | L: 31" R: 30" |
| Circumference | - | L: 9" R: 9" |
| SCI | - | 79" |

ADDITIONAL INFO

A Good strong ram with growth to come.
He is a proven breeder.

\$:

LOT 15 - RED SHEEP

STAR S RANCH SABLE BREEDING BULLS



HARLEY



47'' + BWANA



47'' LLANO





45"+ SAVUTI



47" ZULU



48 4/8" SELOUS XL





LOT 16

| | |
|--------|---|
| Male | 1 |
| Female | 0 |
| Total | 1 |

45"+ PROVEN YOUNG BREEDING SABLE BULL "SAVUTI"

INFORMATION

| | | |
|----------------------|---|---|
| Species | - | Sable |
| Microchip no | - | 985111001814410 |
| Age | - | Adult |
| Age at auction | - | 5y-6y |
| Bloodline / Mito DNA | - | Namibia, Botswana, South Africa and Zimbabwe |
| Nucl DNA | - | Southern 62% Zambian 33% |
| Origin | - | Star S Ranch |

MEASUREMENTS

| | | |
|---------------|---|------------------------------|
| Date measured | - | Feb 3, 2021 |
| Horn length | - | L: 45" R: 44 ^{2/8"} |
| Tip to tip | - | 27" |
| Tips | - | L: 12" R: 11 ^{4/8"} |
| Rings | - | L: 40 R: 42 |
| Circumference | - | L: 9" R: 9" |
| SCI | - | 107 ^{2/8"} |

ADDITIONAL INFO

This is a very special animal, one of our younger breeding bulls. Measuring 45" at +-5 years. He is a proven breeder. Will definitely add value to your breeding herd.

With a great shape, width and long tips this is an excellent bull and with good genetic diversity present.

\$:



45"+ SAVUTI



LOT 17

| | |
|--------|---|
| Male | 0 |
| Female | 1 |
| Total | 1 |

**YOUNG SABLE COW SIRED BY
47" ZULU, BRED TO 47" LLANO**

INFORMATION

| | |
|----------------------|--|
| Species | - Sable |
| Tag no | - S43 |
| DOB | - May 15, 2018 |
| Age | - Sub adult |
| Age at auction | - 2y 11m |
| Bloodline / Mito DNA | - Namibia, Botswana, South Africa and Zimbabwe |
| Nucl DNA | - Southern 53% Zambian 36% Eastern 8% |
| Sire | - 47" Zulu |
| Bred to | - 47" Llano |
| Exposed to | - Running with 45"+ Savuti |

MEASUREMENTS

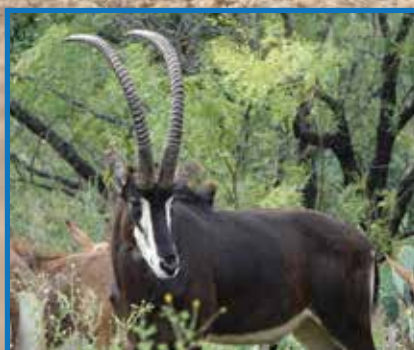
| | |
|---------------|---|
| Date measured | - Jan 19, 2021 |
| Horn Length | - L: 22 ⁴ / ₈ " R: 22" |
| Tip to tip | - 10 ⁴ / ₈ " |
| Circumference | - L: 6 ⁴ / ₈ " R: 6 ⁴ / ₈ " |
| SCI | - 57 ⁴ / ₈ " |

ADDITIONAL INFO

Bred out of one of the best bulls in the industry 47" Zulu, this young female has huge genetic potential and a perfect horn shape. Combine her with 47" Llano, and your breeding for the future!



SIRE 47" ZULU



BRED TO 47" LLANO



EXPOSED TO 45"+ SAVUTI

\$:

LOT 17 - SABLE



LOT 18

| | |
|--------|---|
| Male | 0 |
| Female | 1 |
| Total | 1 |

**SABLE COW SIRED BY 48^{4/8}" SELOUS XL,
BRED TO 47" LLANO**

INFORMATION

| | |
|--------------------|--|
| Species | - Sable |
| Tag no | - S50 |
| DOB | - Jan 15, 2018 |
| Age | - Sub adult |
| Age at auction | - 2y 10m |
| Bloodline/Mito DNA | - Ikelenge, Kafue and Luangwe, Zambia |
| Nucl DNA | - Southern 81% Zambian 15% |
| Sire | - 48 ^{4/8} " Selous XL |
| Bred to | - 47" Llano |
| Exposed to | - Running with 45"+ Savuti |

MEASUREMENTS

| | |
|---------------|---|
| Date measured | - Jan 19, 2021 |
| Horn Length | - L: 25" R: 25" |
| Tip to tip | - 9" |
| Circumference | - L: 7 ^{4/8} " R: 7 ^{4/8} " |
| SCI | - 65" |

ADDITIONAL INFO

An expectational 48^{4/8}" Selous XL daughter,
with excellent genetic backing, good horn
length and exposed to 47" Llano.

\$:



SIRE 48^{4/8}" SELOUS XL



BRED TO 47" LLANO



EXPOSED TO 45"+ SAVUTI



LOT 19

| | |
|--------|---|
| Male | 0 |
| Female | 1 |
| Total | 1 |

**SABLE COW SIRED BY 47" LLANO,
BRED TO 45"+ SAVUTI**

INFORMATION

| | |
|----------------------|--|
| Species | - Sable |
| Tag no | - S28 |
| DOB | - Jan 9, 2012 |
| Age | - Sub adult |
| Age at auction | - 4y 3m |
| Bloodline / Mito DNA | - Namibia, Botswana, South Africa and Zimbabwe |
| Nucl DNA | - Southern 72% Zambian 24% |
| Sire | - 47" Llano |
| Bred to | - 45"+ Savuti |
| Exposed to | - Running with 47" Zulu |

MEASUREMENTS

| | |
|---------------|--|
| Date measured | - Jan 19, 2021 |
| Horn Length | - L: 27" R: 26 ⁶ / ₈ " |
| Tip to tip | - 7 ⁶ / ₈ " |
| Circumference | - L: 6 ⁶ / ₈ " R: 7" |
| SCI | - 67 ⁴ / ₈ " |

ADDITIONAL INFO

A young daughter of 47" Llano with perfect horn symmetry and great genetic backing. Combined with 45"+ Savuti. An excellent genetic combination.



SIRE 47" LLANO



BRED TO 45"+ SAVUTI



EXPOSED TO 47" ZULU

\$:

LOT 19 - SABLE



LOT 20

| | |
|--------|---|
| Male | 1 |
| Female | 2 |
| Total | 3 |

HOG DEER BREEDING PARCEL INFORMATION

Species - Hog Deer
Age - Sub adult
Exposed to - Various bucks

\$:

LOT 21

| | |
|--------|---|
| Male | 1 |
| Female | 2 |
| Total | 3 |

HOG DEER BREEDING PARCEL INFORMATION

Species - Hog Deer
Age - Sub adult
Exposed to - Various bucks

\$:

ADDITIONAL INFO

The opportunity to start small and end up big!

These unique small deer species is perfect for the smaller ranches and pens.

EXAMPLE OF ANIMALS



EXAMPLE OF ANIMALS



EXAMPLE OF ANIMALS

EXAMPLE OF ANIMALS



24" SIRE



EXPOSED TO 26"+ RAM



LOT 22

| | |
|--------|---|
| Male | 0 |
| Female | 1 |
| Total | 1 |

**PROVEN IMPALA EWE SIRED BY
24"+ RAMS AND EXPOSED TO A 26" RAM**

INFORMATION

Species - Impala
Age - Adult
Exposed to - 26" ram

\$:

LOT 23

| | |
|--------|---|
| Male | 0 |
| Female | 1 |
| Total | 1 |

**PROVEN IMPALA EWE SIRED BY
24"+ RAMS AND EXPOSED TO A 26" RAM**

INFORMATION

Species - Impala
Age - Sub adult
Exposed to - 26" ram

\$:

ADDITIONAL INFO

Stacked genetics at its finest. Well bred
impala females with huge genetic potential!

LOT 22 & 23 - IMPALA



LOT 24

| | |
|--------|---|
| Male | 0 |
| Female | 5 |
| Total | 5 |

MARKHOR NANNY'S EXPOSED TO
VARIOUS 34"+ BILLIES

INFORMATION

Species - Markhor
Age - Adult

\$:

LOT 25

| | |
|--------|---|
| Male | 0 |
| Female | 5 |
| Total | 5 |

MARKHOR NANNY'S EXPOSED TO
VARIOUS 34"+ BILLIES

INFORMATION

Species - Markhor
Age - Subadult

\$:

EXAMPLE OF ANIMALS



34 4/8" BREEDER



33"+ BREEDER



LOT 26

| | |
|--------|---|
| Male | 1 |
| Female | 0 |
| Total | 1 |

24" YOUNG MARKHOR BREEDING BILLY

INFORMATION

| | | |
|----------------|---|--------------|
| Species | - | Markhor |
| Tag no | - | 104 Orange |
| Age | - | Sub adult |
| Age at auction | - | 3y |
| Origin | - | Star S Ranch |

MEASUREMENTS

| | | |
|---------------|---|---------------------|
| Date measured | - | Dec 17, 2020 |
| Horn Length | - | L: 24" R: 24" |
| Tip to tip | - | 9 4/8" |
| Circumference | - | L: 9 4/8" R: 9 4/8" |
| SCI | - | 67" |

ADDITIONAL INFO

A good young breeder with a perfect shape and good mass.

This billy still has a lot of growth and is still very young.



SIDE VIEW OF 24" BILLY



34 4/8" SIRE

\$:

LOT 26 - MARKHOR

ROYAL



SIRE: TREE



HALF BROTHER OF ROYAL:
MPRESSIVE @4Y



HALF BROTHER OF ROYAL:
SLEDGEHAMMER



SON OF ROYAL @2Y



SON OF ROYAL @2Y



SON OF ROYAL @2Y



"Where all the BIG bucks come from!"



ROYAL



LOT 27

| | |
|--------|---|
| Male | 1 |
| Female | 0 |
| Total | 1 |

FALLOW DEER BREEDER BUCK "ROYAL"

INFORMATION

| | | |
|----------------|---|---------------------|
| Species | - | Fallow deer |
| DOB | - | Jun1, 2014 |
| Age | - | Adult |
| Age at auction | - | 6y 10m |
| Origin | - | Sola Fe Ranch |
| Sire | - | Tree |
| Dam | - | Lady |
| Grans dire | - | H Buck (Dam's sire) |

ADDITIONAL INFO

We are offering exclusive breeding rights and physical ownership of Royal along with 50% share in semen rights.

Royal is a 2014 son of Tree out of our super doe "Lady". Lady is also the mother to two of our other breeders; Sledgehammer and Mpressive. Lady is out of our H buck which also sired our famed breeder Irish Elk (now known as Thunderstruck).

Royal was our top 2 year old in his class and we bred with him in his third year. He was given a year off of breeding due to a horn infection. This year we have been blown away by the quality of his two year old crop. He has excellent two year olds out of daughters of Mighty Moose, Redman, Joker, Patron, Chief, and Irish Elk aka Thunderstruck. Just a jam up of a buck we are willing to part with because he's left us with such great offspring to breed with.

\$:

LOT 27 - FALLOW DEER



CH108



BRED TO MR BIG



SIRE: CHIEF
2-1366; SPOTTED
31-05-2013

DAM: BA35
MENIL; 31-05-2015

GRAND SIRE: PATRON
AH 560; SPOTTED
31-05-2010

HERD B

GREAT GRAND SIRE:
BUCK H
WHITE 25; SPOTTED
31-05-2005



GRAND SIRE: IRISH ELK
2-1085; SPOTTED
06-10-2010

HERD A

GREAT GRAND SIRE:
BUCK H
WHITE 25; SPOTTED
31-05-2005



CHIEF

SIRE OF CH108



LOT 28

| | |
|--------|---|
| Male | 0 |
| Female | 1 |
| Total | 1 |

HIGH POWERED CHIEF DAUGHTER BRED TO MR BIG (BUYER IS BUYING FULL OWNERSHIP OF HER AND 100% INTEREST IN FAWN IF A DOE AND 50% INTEREST IN FAWN IF A BUCK)

INFORMATION

| | |
|----------------|---|
| Species | - Fallow deer |
| Tag | - CH108 |
| DOB | - Jun 1, 2018 |
| Age | - Adult |
| Age at auction | - 2y 10m |
| Origin | - Sola Fe Ranch |
| Sire | - Chief |
| Dam | - BA35 |
| Grand sire | - Irish Elk aka Thunderstruck (Dam's sire) / Patron (Sire's sire) |
| Bred to | - Mr Big |
| Date available | - Sola Fe Ranch will fawn this doe out since time of auction is weeks away from due date. Buyer will pick up doe when we work them at weaning in September. |

ADDITIONAL INFO

This DNA certified daughter of Chief is out of an Irish Elk AKA Thunderstruck daughter. Chief is a true 12 inch palm buck and a proven outstanding producer who hasn't thrown a shabby buck yet. We currently have selected 4 of his sons to be breeders. The sons are Geronimo (who is also out of an Irish Elk daughter and boasted an 8 inch palm at just two years old), War Cry, War Cloud and Legend. The dam BA35 is out of Irish Elk AKA Thunderstruck who was our famed breeder and the foundation for many other programs. Irish Elk speaks for himself with his huge palms, frame and outstanding offspring. This doe has been exposed to our breeder, Mr Big. Mr Big has it all...palms, points, flare, and is one of the most beautiful shaped and proportioned bucks you'll see. He not just big he's Mr Big!

\$:

LOT 28 - FALLOW DEER



BK360



SIRE: MR. BIG
2-1397; SPOTTED
05-01-2015

DAM: AG 46
2-1401; CHOCOLATE
31-05-2016



GREAT GRAND SIRE:
BUCK R
AG 168;
CHOCOLATE
06-01-2008

GRAND SIRE: REDMAN
CR 2; SPOTTED
06-01-2012



GREAT GRAND SIRE:
IRISH ELK
2-1085; SPOTTED
06-01-2010

GRAND DAM:
BIG MAMMA
2-1357; SPOTTED
06-01-2013



GREAT GRAND SIRE:
PATRON
AH 560; SPOTTED
31-05-2010

GRAND SIRE: MIGHTY MOOSE
2-1364; CHOCOLATE
06-01-2013

GRAND DAM: 511 BK
2-1355; CHOCOLATE
06-01-2011

GREAT GRAND SIRE:
BUCK K
377 YELLOW;
CHOCOLATE;
01-01-2007



MR BIG

SIRE OF BK360



LOT 29

| | |
|--------|---|
| Male | 0 |
| Female | 1 |
| Total | 1 |

MR BIG DAUGHTER WITH STACKED GENETICS

INFORMATION

| | |
|----------------|--|
| Species | - Fallow deer |
| Tag | - BK360 |
| Age | - Sub adult |
| Age at auction | - 12m-15m |
| Origin | - Sola Fe Ranch |
| Sire | - Mr Big |
| Dam | - Mighty Moose daughter |
| Grand sire | - Redman (Sire's sire) / Patron (Dam's sire) |
| Grand dam | - Irish Elk aka Thunderstruck daughter Big Mama (Sire's dam) |

ADDITIONAL INFO

This 2020 DNA Certified Doe Fawn is out of our breeder Mr Big. This doe is stacked with all the power bucks in her pedigree.

Mr Big has it all - big frame, palms, flare, points and spread. He's not just big he's Mr BIG! Mr Big is out of our big palmed breeder Redman and an Irish Elk aka Thunderstruck daughter we call "Big Mama". The dam of this doe is out of our breeder Mighty Moose. Mighty Moose is a massive chocolate buck who's heaviness and frame is consistently showing up in his sons. He is a son of Patron and half brother to Chief. We chose two of Mighty Moose's sons to be breeders last year, Mighty Fine and Mpressive.

\$:

LOT 29 - FALLOW DEER



LOT 30

| | |
|--------|---|
| Male | 0 |
| Female | 2 |
| Total | 2 |

ARABIAN ORYX COWS

INFORMATION

| | |
|----------------------|-----------------|
| Species | - Arabian Oryx |
| Age | - Adult |
| Bloodline / Mito DNA | - Arabian Oryx |
| Origin | - Star S Ranch |
| Exposed to | - Various bulls |
| Available | - Immediately |

\$:

LOT 31

| | |
|--------|---|
| Male | 0 |
| Female | 2 |
| Total | 2 |

ARABIAN ORYX COWS

INFORMATION

| | |
|----------------------|-----------------|
| Species | - Arabian Oryx |
| Age | - Sub adult |
| Bloodline / Mito DNA | - Arabian Oryx |
| Origin | - Star S Ranch |
| Exposed to | - Various bulls |
| Available | - Immediately |

\$:

ADDITIONAL INFO

Good breeding females out of our extensive herd.

EXAMPLE OF ANIMALS





LOT 32

| | |
|--------|---|
| Male | 1 |
| Female | 0 |
| Total | 1 |

28" BONGO BREEDING BULL

INFORMATION

| | | |
|----------------|---|---------------|
| Species | - | Bongo |
| Age | - | Sub adult |
| Age at auction | - | 3y 6m |
| Origin | - | Star S Ranch |
| Sire | - | 35" Guatemala |
| Date available | - | Immediately |

MEASUREMENTS

| | | |
|---------------|---|---|
| Date measured | - | Feb 5, 2021 |
| Horn Length | - | L: 28 ⁶ / ₈ " R: 28" |
| Tip to tip | - | 9 ⁴ / ₈ " |
| Circumference | - | L: 10 ⁴ / ₈ " R: 10 ⁴ / ₈ " |
| SCI | - | 77 ⁶ / ₈ " |

ADDITIONAL INFO

Big vibrant bodied bongo bull, ready for your female herd!

If you want to get your hand on a bongo bull this is your chance.

\$:

LOT 32 - BONGO



28" BREEDING BULL



SIRE: 35" GUATEMALA



LOT 33

| | |
|--------|---|
| Male | 0 |
| Female | 5 |
| Total | 5 |

ALPINE IBEX BREEDING NANNY'S EXPOSED TO VARIOUS 34"+ BILLIES

INFORMATION

Species - Alpine Ibex
Age - Adult

ADDITIONAL INFO

Proven breeding females.

\$:

LOT 34

| | |
|--------|---|
| Male | 0 |
| Female | 5 |
| Total | 5 |

ALPINE IBEX NANNY'S EXPOSED TO VARIOUS 34"+ BILLIES

INFORMATION

Species - Alpine Ibex
Age - Subadult

ADDITIONAL INFO

Young females ready to breed.

\$:

EXAMPLE OF ANIMALS



EXAMPLE OF ANIMALS



EXPOSED TO 34"+ BILLIES

LOT 33 & 34 - ALPINE IBEX



LOT 35

| | |
|--------|---|
| Male | 1 |
| Female | 0 |
| Total | 1 |

EXTRAORDINARY 34 ⁴/₈" NORDIC

INFORMATION

| | | |
|----------------|---|-----------------|
| Species | - | Alpine Ibex |
| Microchip no | - | 985111001899989 |
| Age | - | Adult |
| Age at auction | - | 6y-7y |
| Origin | - | Star S Ranch |
| Date available | - | Immediately |

MEASUREMENTS

| | | |
|---------------|---|---|
| Date measured | - | Feb 10, 2021 |
| Age measured | - | 6y-7y |
| Horn Length | - | L: 34 ⁴ / ₈ " R: 34" |
| Tip to tip | - | 24 ⁴ / ₈ " |
| Circumference | - | L: 10 ⁴ / ₈ " R: 10 ⁴ / ₈ " |
| SCI | - | 89 ⁴ / ₈ " |

ADDITIONAL INFO

This is an exceptional animal with great horn length and sturdy body.

This billy will rank the No. 5 of all time North American Alpine Ibex according to the SCI record books.

\$:

NORDIC



LOT 35 - ALPINE IBEX



LOT 36

| | |
|--------|---|
| Male | 0 |
| Female | 1 |
| Total | 1 |

SABLE COW BRED TO IMPI

INFORMATION

| | |
|----------------|---------------|
| Species | - Sable |
| Age | - Adult |
| Age at auction | - 4y-5y |
| Date available | - Immediately |

\$:



BRED TO IMPI



BRED TO IMPI

LOT 36 - SABLE



LOT 37

| | |
|--------|---|
| Male | 0 |
| Female | 1 |
| Total | 1 |

SABLE COW BRED TO IMPI

INFORMATION

| | | |
|----------------|---|-------------|
| Species | - | Sable |
| Age | - | Adult |
| Age at auction | - | 4y - 5y |
| Date available | - | Immediately |



BRED TO IMPI



BRED TO IMPI

\$:

LOT 37 - SABLE



LOT 38

| | |
|--------|---|
| Male | 0 |
| Female | 1 |
| Total | 1 |

PROVEN NYALA BREEDING EWE

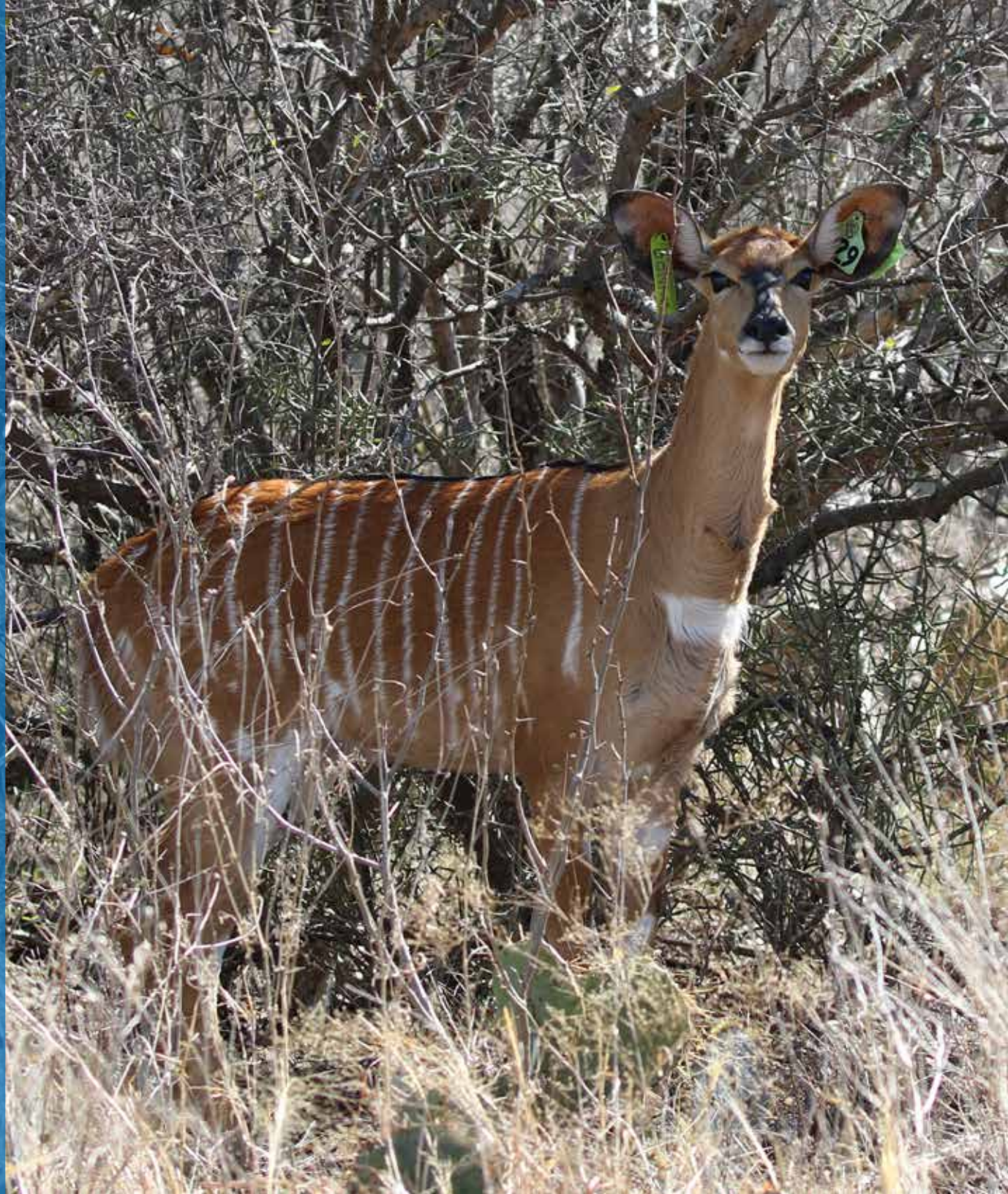
INFORMATION

| | |
|------------------|--------------------|
| Species | - Nyala |
| Tag | - S29 Green |
| Microchip number | - 999010000000275 |
| Age | - Sub adult |
| Exposed to | - Young Nyala bull |
| Date available | - Immediately |

ADDITIONAL INFO

The only female on sale today.

\$:





LOT 39

| | |
|--------|---|
| Male | 1 |
| Female | 0 |
| Total | 1 |

PROVEN NYALA BREEDING BULL

INFORMATION

| | | |
|----------------|---|-------------|
| Species | - | Nyala |
| Age | - | Adult |
| Date available | - | Immediately |

ADDITIONAL INFO

A proven breeder with great horn shape and length



\$:

LOT 39 - NYALA



LOT 40

| | |
|--------|---|
| Male | 0 |
| Female | 5 |
| Total | 5 |

NUBIAN IBEX BREEDING NANNY'S EXPOSED TO VARIOUS 35" - 39 6/8" BILLIES INFORMATION

Species - Nubian Ibex
Age - Adult

ADDITIONAL INFO

Proven breeding females.

\$:

LOT 41

| | |
|--------|---|
| Male | 0 |
| Female | 5 |
| Total | 5 |

NUBIAN IBEX BREEDING NANNY'S EXPOSED TO VARIOUS 35" - 39 6/8" BILLIES INFORMATION

Species - Nubian Ibex
Age - Sub adult

ADDITIONAL INFO

Young females ready to breed.

\$:

EXAMPLE OF ANIMALS



EXPOSED TO 35" - 39 6/8" BILLIES



LOT 42

| | |
|--------|---|
| Male | 1 |
| Female | 0 |
| Total | 1 |

EXCEPTIONAL 43" NUBIAN IBEX BREEDING BILLY

INFORMATION

| | | |
|----------------|---|--------------|
| Species | - | Nubian Ibex |
| Age | - | Adult |
| Origin | - | Star S Ranch |
| Date available | - | Immediately |

MEASUREMENTS

| | | |
|---------------|---|---------------|
| Horn length | - | L: 43" R: 43" |
| Circumference | - | L: 8" R: 8" |

ADDITIONAL INFO

A proven breeder with great horn length and mass, ready to add value to your herd.

Proven and hardy superior genetics, born and raised on Hatada Ranch.

\$:

LOT 42 - NUBIAN IBEX



LOT 43

| | |
|--------|---|
| Male | 0 |
| Female | 1 |
| Total | 1 |

21 ^{4/8}" YOUNG PROVEN ROAN COW BRED TO 26" CAPT. JACK

INFORMATION

| | | |
|----------------------|---|--|
| Species | - | Roan |
| Tag no | - | Red 52 |
| Microchip no | - | 999010000000157 |
| DOB | - | Jun 26, 2016 |
| Age | - | Sub adult |
| Age at auction | - | 4y 9m |
| Bloodline / Mito DNA | - | H.e. Cottoni (Angola, Malawi, Zambia) |
| Nucl DNA | - | Bakeri 9% Langheldi 35% Cottoni 15% Equinus 36% |
| Bred to | - | 26" Captain Jack |
| Date Available | - | Immediately |

MEASUREMENTS

| | | |
|---------------|---|---|
| Horn length | - | L: 21 ^{4/8} " R: 21 ^{4/8} " |
| Tip to tip | - | 12 ^{4/8} " |
| Circumference | - | L: 7" R: 7" |
| SCI | - | 57" |

ADDITIONAL INFO

A Beautiful young symmetrical roan cow,
with good horn length and body conformity.

Good genetic diversity is present within this
animal. This adds to stronger more resilient
animals.

\$:



BRED TO
26" CAPTAIN JACK

LOT 43 - ROAN

[26"+ LENOX]



| LOT 44 | |
|--------|---|
| Male | 1 |
| Female | 0 |
| Total | 1 |

26"+ LENOX

INFORMATION

| | | |
|---------------------|---|---|
| Specie | - | Roan |
| DOB | - | Apr 15, 2017 |
| Age | - | Sub adult |
| Age at auction | - | 4y 0m |
| Bloodline/Mito DNAs | - | H.e. Cottoni (Angola, Malawi, Zambia) |
| Nucl DNA | - | Bakeri 13% Langheldi 34% Cottoni 12% Equinus 35% |
| Sire | - | 26" Captain Jack |
| Date Available | - | Immediately |

MEASUREMENTS

| | | |
|---------------|---|-------------------|
| Horn length | - | L: 25 4/8" R: 26" |
| Tip to tip | - | 12 4/8" |
| Circumference | - | L: 10" R: 10 4/8" |
| SCI | - | 72" |

ADDITIONAL INFO

A young bull with lots of potential, good symmetry and horn length. A good way to get your herd started.

Good genetic diversity is present within this animal. This adds to stronger more resilient animals.

\$:



SIRE
26" CAPTAIN JACK



LOT 45

| | |
|--------|---|
| Male | 1 |
| Female | 0 |
| Total | 1 |

YOUNG ROAN BULL

INFORMATION

| | | |
|----------------|---|--------------|
| Species | - | Roan |
| DOB | - | Jan 15, 2020 |
| Age | - | Yearling |
| Age at auction | - | 1y 3m |
| Date Available | - | Immediately |

ADDITIONAL INFO

This yearling shows great potential to be a top breeder one day.

Proven and superior genetics, born and raised on Hatada Ranch in a free roaming environment.

\$:





LOT 46

| | |
|--------|---|
| Male | 1 |
| Female | 0 |
| Total | 1 |

TROPHY HUNTING PACKAGE

INFORMATION

| | |
|----------------|--|
| Species | - Eland |
| Age | - Trophy |
| Date available | - Arrange with Star S Management for available dates |

ADDITIONAL INFO

Trophy hunting package consisting of a mature Eland bull for one hunter / 2 nights stay and 3 hunting days.

Come out and be treated on a 5 star hunt on Star S Ranch. Experience Africa in Texas!



\$:



LOT 47

| | |
|--------|---|
| Male | 1 |
| Female | 0 |
| Total | 1 |

GRANTS GAZELLE

INFORMATION

Species - Grants Gazelle
Age - Adult
Date available - Immediately

ADDITIONAL INFO

An excellent breeder with great horn length and mass.

Proven and hardy superior genetics, born and raised on Hatada Ranch.

\$:





LOT 48A

| | |
|--------|---|
| Male | 5 |
| Female | 0 |
| Total | 5 |

GRANTS GAZELLE

INFORMATION

| | | |
|----------------|---|----------------|
| Species | - | Grants Gazelle |
| Age | - | Young |
| Age at auction | - | 2y |
| Date available | - | Immediately |

\$:

LOT 48B

| | |
|--------|---|
| Male | 5 |
| Female | 0 |
| Total | 5 |

GRANTS GAZELLE

INFORMATION

| | | |
|----------------|---|----------------|
| Species | - | Grants Gazelle |
| Age | - | Young |
| Age at auction | - | 2y |
| Date available | - | Immediately |

\$:

ADDITIONAL INFO

Five young rams with good potential, great set of stocker rams.

Proven and hardy superior genetics, born and raised on Hatada Ranch.



LOT 49

| | |
|--------|---|
| Male | 0 |
| Female | 3 |
| Total | 3 |

FOUNDATION DOES BRED TO SLEDGEHAMMER INFORMATION

| | |
|---------|----------------|
| Species | - Fallow deer |
| Age | - Adult |
| Bred to | - Sledgehammer |

ADDITIONAL INFO

These females will be sold as bred with DNA, and comes with one straw of Batman semen. These animals are located in Fannett, Texas.

\$:

LOT 50

| | |
|--------|---|
| Male | 0 |
| Female | 3 |
| Total | 3 |

FOUNDATION DOES BRED TO BATMAN INFORMATION

| | |
|---------|---------------|
| Species | - Fallow deer |
| Age | - Adult |
| Bred to | - Batman |

ADDITIONAL INFO

These females will be sold as bred with DNA, and comes with one straw of Sledgehammer semen. These animals are located in Fannett, Texas.

\$:



SLEDGEHAMMER



BATMAN

EXAMPLE OF ANIMALS



EXAMPLE OF ANIMALS



LOT 51

| | |
|--------|---|
| Male | 1 |
| Female | 1 |
| Total | 2 |

GRÉVY'S ZEBRA BREEDING PARCEL

INFORMATION

- Species - Grévy's Zebra
- Age - Sub adult
- Bloodline / Mito DNA - Grévy's

\$:

LOT 52

| | |
|--------|---|
| Male | 1 |
| Female | 1 |
| Total | 2 |

GRÉVY'S ZEBRA BREEDING PARCEL

INFORMATION

- Species - Grévy's Zebra
- Age - Sub adult
- Bloodline / Mito DNA - Grévy's

\$:

ADDITIONAL INFO

The opportunity to own the biggest and most beautiful zebra subspecies

LOT 51 & 52 - GRÉVY'S ZEBRA



LOT 53

| | |
|--------|---|
| Male | 0 |
| Female | 1 |
| Total | 1 |

30" SABLE COW BRED TO 47" LLANO

INFORMATION

| | |
|----------------------|--|
| Species | - Sable |
| Tag no | - Blue 43 |
| DOB | - Aug 16, 2012 |
| Age | - Adult |
| Age at auction | - 8y 8m |
| Bloodline / Mito DNA | - Ikkelenge, Kafue and Luangwe, Zambia |
| Nucl DNA | - Southern 56% Zambian 28% Eastern 12% |
| Bred to | - 47" Llano |
| Exposed to | - Running with 45"+ Savuti |

MEASUREMENTS

| | |
|---------------|-----------------------|
| Date measured | - Jan 19, 2021 |
| Horn length | - L: 30" R: 29 2/8" |
| Tip to tip | - 12" |
| Circumference | - L: 6 4/8" R: 6 4/8" |
| SCI | - 72 2/8" |

ADDITIONAL INFO

A Proven 30" sable breeding cow. Bred to 47"+ Llano, a great combination of horn length.

A proven 30" breeding cow with good genetic diversity. Your chance to acquire mitochondrial Zambian linages.

\$:



BRED TO 47" LLANO



EXPOSED TO 45"+ SAVUTI



LOT 54

| | |
|--------|---|
| Male | 0 |
| Female | 1 |
| Total | 1 |

27 ²/₈" SABLE COW BRED TO 47" LLANO

INFORMATION

| | |
|----------------------|--|
| Species | - Sable |
| Tag no | - B 55 |
| DOB | - Aug 16, 2013 |
| Age | - Adult |
| Age at auction | - 7y 8m |
| Bloodline / Mito DNA | - Namibia, Botswana, South Africa and Zimbabwe |
| Nucl DNA | - Southern 55% Zambian 12% West Tanzania 14% |
| Origin | - Star S Ranch |
| Bred to | - 47" Llano |
| Exposed to | - Running with 45"+ Savuti |

MEASUREMENTS

| | |
|---------------|---|
| Date measured | - Jan 19, 2021 |
| Horn length | - L: 26 ⁶ / ₈ " R: 27 ² / ₈ " |
| Tip to tip | - 11" |
| Circumference | - L: 6 ² / ₈ " R: 6 ² / ₈ " |
| SCI | - 66 ⁴ / ₈ " |

ADDITIONAL INFO

A well bred sable cow originating out of our founder herd and bred to 47" Llano.

A proven breeding cow with the West Tanzania lineage on the Nucl DNA side, one of the oldest known sable lineages.

\$:



BRED TO 47" LLANO



EXPOSED TO 45"+ SAVUTI



LOT 55

| | |
|--------|---|
| Male | 0 |
| Female | 1 |
| Total | 1 |

26" SABLE COW BRED TO 45"+ SAVUTI

INFORMATION

| | |
|---------------------|--|
| Species | - Sable |
| Tag no | - Blue 33 |
| DOB | - Apr 24, 2012 |
| Age | - Adult |
| Age at auction | - 9y 0m |
| Bloodline/ Mito DNA | - Ikelenge, Kafue and Luangwe, Zambia |
| Nucl DNA | - Southern 57% Zambian 38% |
| Bred to | - 45"+ Savuti |
| Exposed to | - Running with 47" Zulu |

MEASUREMENTS

| | |
|---------------|---|
| Date measured | - Jan 19, 2021 |
| Horn length | - L: 26" R: 26" |
| Tip to tip | - 12" |
| Circumference | - L: 6 ⁴ / ₈ " R: 6 ⁴ / ₈ " |
| SCI | - 65" |

ADDITIONAL INFO

A Proven sable breeding cow, with an excellent breeding record. Bred to 45"+Savuti, An excellent genetic combination.

A proven 26"breeding cow with good genetic diversity. Your chance to acquire mitochondrial Zambian linages.

\$:



BRED TO 45"+ SAVUTI



EXPOSED TO 47" ZULU



LOT 56

| | |
|--------|---|
| Male | 1 |
| Female | 0 |
| Total | 1 |

42"+ CHEWY

INFORMATION

| | |
|----------------------|--|
| Species | - Sable |
| Tag no | - R1 |
| Microchip no | - 985111000940619 |
| Age | - Adult |
| Age at auction | - 5y 6m |
| Bloodline / Mito DNA | - Namibia, Botswana, South Africa and Zimbabwe |
| Nucl DNA | - Southern 66% West Tanzania 19% |
| Origin | - Star S Ranch |

MEASUREMENTS

| | |
|---------------|---|
| Date measured | - Feb 3, 2021 |
| Horn length | - L: 42" R: 41 ^{4/8"} |
| Tip to tip | - 26 ^{4/8"} |
| Tips | - L: 9" R: 9" |
| Ring | - L: 41 R: 40 |
| Circumference | - L: 9 ^{4/8"} R: 9 ^{4/8"} |
| SCI | - 102 ^{4/8"} |

ADDITIONAL INFO

A young bull with lots of potential, good symmetry, shape and horn length. With a strong posture. This bull offers a West Tanzanian Bloodline on his nuclear side and will surely be an asset to any breeder who wants to incorporate good genetic diversity out of one of the oldest known sable lineages.

\$:

LOT 56 - SABLE



LOT 57

| | |
|--------|---|
| Male | 0 |
| Female | 2 |
| Total | 2 |

**PROVEN BREEDING COWS EXPOSED TO
VARIOUS BREEDING BULLS MEASURING
BETWEEN 36" - 40+"**

INFORMATION

| | | |
|---------|---|------------------|
| Species | - | Eland |
| Age | - | Adult |
| Bred to | - | 36" - 40+" Bulls |

\$:

LOT 58

| | |
|--------|---|
| Male | 0 |
| Female | 2 |
| Total | 2 |

**HEIFERS EXPOSED TO VARIOUS
BREEDING BULLS MEASURING
BETWEEN 36" - 40+"**

INFORMATION

| | | |
|---------|---|------------------|
| Species | - | Eland |
| Age | - | Sub adult |
| Bred to | - | 36" - 40+" Bulls |

\$:

ADDITIONAL INFO

These animals will be selected out of a very diverse group of animals which will ensure good genetic diversity.

Our Eland roam freely in a 4000 acre pasture and is hardy and adapted to any conditions.

EXAMPLE OF ANIMALS



EXAMPLE OF ANIMALS

LOT 57 & 58 - ELAND



LOT 59

| | |
|--------|---|
| Male | 1 |
| Female | 0 |
| Total | 1 |

EXCELLENT 36" YOUNG BREEDING BULL

INFORMATION

| | | |
|----------------|---|--------------|
| Species | - | Eland |
| Tag no | - | White |
| Age | - | Sub adult |
| Age at auction | - | 3y 6m |
| Origin | - | Star S Ranch |

MEASUREMENTS

| | | |
|---------------|---|---------------|
| Date measured | - | Jan 23, 2021 |
| Horn Length | - | L: 36" R: 36" |
| Circumference | - | L: 14" R: 14" |
| SCI | - | 100" |

ADDITIONAL INFO

This is still a young bull and shows lots of potential to be a class breeder.

Our Eland roam freely in a 4000 acre pasture and is hardy and adapted to any conditions.

\$:

[36" BULL]



LOT 59 - ELAND



LOT 60

| | |
|--------|---|
| Male | 1 |
| Female | 0 |
| Total | 1 |

MATURE NYALA BULL

INFORMATION

| | | |
|----------------|---|--------------|
| Species | - | Nyala |
| Age | - | Adult |
| Origin | - | Hatada Ranch |
| Date available | - | Immediately |

ADDITIONAL INFO

Mature bull in its prime, perfect for breeding or hunting.

Proven and superior genetics, born and raised on Hatada Ranch in a free roaming environment.

\$:





LOT 61

| | |
|--------|---|
| Male | 1 |
| Female | 0 |
| Total | 1 |

MATURE NYALA BULL

INFORMATION

| | | |
|----------------|---|--------------|
| Species | - | Nyala |
| Age | - | Adult |
| Origin | - | Hatada Ranch |
| Date available | - | Immediately |

ADDITIONAL INFO

Mature bull in its prime, perfect for breeding or hunting.

Proven and superior genetics, born and raised on Hatada Ranch in a free roaming environment.

\$:

LOT 61 - NYALA



LOT 62

| | |
|--------|---|
| Male | 0 |
| Female | 5 |
| Total | 5 |

RED STAG BREEDING FEMALES

INFORMATION

| | |
|----------------|----------------|
| Species | - Red Stag |
| Age | - Adult |
| Origin | - Star S Ranch |
| Date available | - Immediately |

\$:

LOT 63

| | |
|--------|---|
| Male | 0 |
| Female | 5 |
| Total | 5 |

RED STAG BREEDING FEMALES

INFORMATION

| | |
|----------------|----------------|
| Species | - Red Stag |
| Age | - Adult |
| Origin | - Star S Ranch |
| Date available | - Immediately |

\$:

ADDITIONAL INFO

These animals are located in Fannett, Texas.

EXAMPLE OF ANIMALS



EXAMPLE OF ANIMALS



SIRE 63"+ CURLY BILL



EXPOSED TO 58"+ WIDEMAN



LOT 64

| | |
|--------|---|
| Male | 0 |
| Female | 2 |
| Total | 2 |

**KUDU HEIFERS, DAUGHTERS OF
63"+ CURLY BILL, EXPOSED TO
58"+ WIDEMAN**

INFORMATION

| | |
|----------------------|-------------------|
| Species | - Kudu |
| Age | - Subadult |
| Bloodline / Mito DNA | - Greater Kudu |
| Origin | - Star S Ranch |
| Sire | - 63"+ Curly Bill |
| Sire origin | - Star S Ranch |
| Exposed to | - 58"+ Wideman |

ADDITIONAL INFO

This is unbelievable Kudu genetics. Stacked genetics with a proven breeding history. This is your chance to get top animals with certain potential!

Don't miss the opportunity to get your hands on well bred Kudu females.

\$:

LOT 64 - KUDU



LOT 65

| | |
|--------|---|
| Male | 0 |
| Female | 2 |
| Total | 2 |

KUDU HEIFERS, DAUGHTERS OF 58"+ WIDEMAN EXPOSED TO 63"+ CURLY BILL INFORMATION

| | |
|----------------------|-------------------|
| Species | - Kudu |
| Age | - Sub adult |
| Bloodline / Mito DNA | - Greater Kudu |
| Origin | - Star S Ranch |
| Sire | - 58"+ Wideman |
| Sire origin | - Star S Ranch |
| Exposed to | - 63"+ Curly Bill |

ADDITIONAL INFO

This is unbelievable Kudu genetics. Stacked genetics with a proven breeding history. This is your chance to get top animals with certain potential!

Don't miss the opportunity to get your hands on well bred Kudu females.

\$:

EXAMPLE OF ANIMALS



SIRE 58"+ WIDEMAN



EXPOSED TO 63"+ CURLY BILL



LOT 66

| | |
|--------|---|
| Male | 0 |
| Female | 2 |
| Total | 2 |

PROVEN KUDU BREEDING COWS
EXPOSED TO 63"+ CURLY BILL

INFORMATION

- Species - Kudu
- Age - Adult
- Bloodline / Mito DNA - Greater Kudu
- Exposed to - 63"+ Curly Bill

ADDITIONAL INFO

Some of the best Kudu genetics in the USA, proven breeders who has produced exceptional offspring.



EXPOSED TO 63"+ CURLY BILL

\$:



LOT 67

| | |
|--------|---|
| Male | 0 |
| Female | 2 |
| Total | 2 |

PROVEN KUDU BREEDING COWS EXPOSED TO 58"+ WIDEMAN

INFORMATION

| | |
|----------------------|----------------|
| Species | - Kudu |
| Age | - Adult |
| Bloodline / Mito DNA | - Greater Kudu |
| Exposed to | - 58"+ Wideman |

ADDITIONAL INFO

Some of the best Kudu genetics in the USA, proven breeders who has produced exceptional offspring

\$:



EXPOSED TO 58"+ WIDEMAN



LOT 68

| | |
|--------|---|
| Male | 1 |
| Female | 0 |
| Total | 1 |

YOUNG UPCOMING KUDU BULL, SON OF 58"+ WIDEMAN

INFORMATION

| | |
|--------------------|----------------|
| Species | - Kudu |
| Age at Auction | - 4y - 4y 6m |
| Bloodline/Mito DNA | - Greater Kudu |
| Origin | - Star S Ranch |
| Sire | - 58"+ Wideman |
| Sire origin | - Star S Ranch |
| Date available | - Immediately |

MEASUREMENTS

| | |
|---------------|--|
| Date measured | - Jan 23, 2021 |
| Age measured | - 4y |
| Horn length | - L: 47" R: 45 ⁴ / ₈ " |
| Tip to tip | - 45" |
| Circumference | - L: 10" R: 10" |
| SCI | - 112 ⁴ / ₈ " |

ADDITIONAL INFO

If width is what your looking to add to your herd, your looking at the right animal!

He is a proven breeder and has been with heifers for one season.



SIRE 58"+ WIDEMAN

\$:

LOT 68 - KUDU



LOT 69

| | |
|--------|---|
| Male | 1 |
| Female | 1 |
| Total | 2 |

CAPE BUFFALO HEIFER AND YOUNG BULL

INFORMATION

Species - Cape Buffalo
Tag - White 26 and
White 27
DOB - Dec 15, 2019
Age at auction - 1y 4m
Available - Immediately

ADDITIONAL INFO

Awesome pair to start your herd.

Proven and superior genetics, born and
raised on Hatada Ranch in a free roaming
environment.

\$:





LOT 70

| | |
|--------|---|
| Male | 1 |
| Female | 0 |
| Total | 1 |

TIMOTHY GELDED GIRAFFE

INFORMATION

| | |
|----------------------|--------------------------|
| Species | - Giraffe |
| Age at Auction | - 8y |
| Bloodline / Mito DNA | - Reticulated Giraffe |
| Height | - Approximately 17' tall |

ADDITIONAL INFO

Gelding. Good feet

Perfect specimen.

\$:

LOT 70 - GIRAFFE



LOT 71

| | |
|--------|---|
| Male | 1 |
| Female | 0 |
| Total | 1 |

TOMMY GELDED GIRAFFE

INFORMATION

Species - Giraffe
Age at Auction - 6y
Bloodline / Mito DNA - Reticulated Giraffe
Height - Approximately 16' tall

ADDITIONAL INFO

Gelding. Good feet

Perfect specimen.

\$:





INAUGURAL AUCTION APRIL 24TH, 2021

RULES OF AUCTION AND TERMS AND CONDITIONS

Registration: Prior to bidding, all prospective buyers must register and receive a bidder number. Buyer must indicate method of payment at time of registration. By registering as a buyer, the buyer agrees to the terms and conditions of the auction.

Description and Guarantee: Unless otherwise indicated the pictures provided may not be the exact animal and are indicated as such by "Example of animals" but they are equivalent representations of the animals you will receive.

Bidding: Each auction lot will be sold to the highest bidder, as determined by the auctioneer.

Buyers are bidding per piece to take the lot, unless where explicitly stated otherwise by the Auctioneer or in the auction catalog. All goods sold by auction will be subject to a reserve price, unless specifically stated otherwise by the auctioneer conducting the auction

Bidding disputes: In the event of tie bids (bidding disputes), the auctioneer will settle any such disputes and his decision will be final. Once the auctioneer says "SOLD," a contract is created solely between the seller and buyer. A bidding sheet will be submitted to the buyer for their immediate acknowledgment and signature.

Announcements: Announcements from the auction block will take precedence over printed material, including the auction catalog and any other printed or digital material.

Online Bidding: This auction will be simulcast on the internet by DV Auction as a convenience. Online bidders agree that due to the nature of internet connections, the best way for acceptance of a bid is to be present at the auction. Star S Ranch and their guest sellers will not be liable for loss of connection and/or technical difficulties. In the event of technical issues, please contact DV Auction directly at (402) 474-5557.

Settlement: All accounts are due the day of the auction. Payment methods include cash, check, wire transfer or credit card. A handling fee of 3% will apply to credit card purchases.

Transfer and Possession: The buyer will take possession only when full payment is received. All risk will carry over to the buyer once the animal/s are safely loaded onto the buyers transport. Star S ranch and their guest sellers agrees to maintain, in good condition, the animals purchased in this auction until full settlement is made and the animals purchased on this auction have been loaded onto the buyer's transport.

Delivery and/or transport of the animals and any associated costs are solely for the buyer's account.

Liability: All persons who attend this auction do so at their own risk. Neither Star S Ranch its guest sellers, auctioneer nor employees assume liability, legal or otherwise, for any accidents which may occur.

Contract: The above terms and conditions shall constitute a contract between the purchaser and seller of each animal and/or lot sold.

By entering a bid any prospective buyer binds himself or herself to these Rules of Auction, as well as any special conditions of sale set forth in the auction catalog.

A NOTE FOR LIVESTOCK

Under Section 179 and 168k, significant tax savings can be derived as a breeder of livestock.

Exotic wildlife are deemed to be livestock. Therefore, when purchasing exotic wildlife for the purpose of breeding, the purchaser may deduct 100% of purchase price as well as all costs associated with the care of these animals in the year of acquisition. The current maximum deduction in one year is limited to \$2,500,000. If however, you exceed this amount, you may use section 168k (Bonus Depreciation) to deduct any excess.

If you intend to be, or are a breeder of exotic wildlife, all purchases made today are able to be deducted in full for the tax year 2021.

DV AUCTIONS TERMS AND CONDITIONS

THE FOLLOWING DESCRIBES THE TERMS WHEREBY DVAUCTION, INC. & WWW.DVAUCTION.COM OFFERS ACCESS TO OUR SERVICES

The following terms and conditions are applicable to all sales and purchases through our website(s). We may amend these terms and conditions at any time by posting the amended terms on our site. You can review the most current version of the Terms and Conditions at any time on this page. It is your responsibility to check this page periodically for changes. These terms may be revised at any time without notice. By using this website you are agreeing to be bound by the current version.

Eligibility to use our site.

Registering to view auctions on our site is free upon completing the required registration process unless otherwise stated within the terms of the sale. In order to bid on and purchase livestock/merchandise on our site, you must register for online bidding approval by submitting your application to bid. Upon approval, you will be allowed bidding privileges at the auction. Online bidding/buying privileges are available only to persons who can form legally binding contracts under applicable law. Without limiting the foregoing, our services are not available for minors. If you do not qualify, please do not use our services. We may refuse our services to anyone at any time, at our sole discretion.

GENERAL TERMS

Any announcements at the time of auction or bidding will take precedence over material previously provided. Transportation of livestock is the sole responsibility of the buyer. All shipping of any kind shall be at buyer's expense. All livestock/consignments sold through DVAuction, Inc. are purchased subject to federal and state inspection.

Any extraordinary health certificates, tests, or documentation required for shipment shall be at buyer's expense.

THE FOLLOWING RULES ARE SPECIFICALLY APPLICABLE TO AUCTIONS

Buyers: If you have the highest bid, you are obligated to complete the transaction. Bids are not retractable. Every transmission over the Internet travels a different route and can be delayed by a variety of factors, including the bidder's own computer. The time lapse between submission of a bid and its registration by the website can vary by several seconds resulting in the possibility of your bid being taken at a higher price than you intended. Do not submit bids during a flurry of bidding activity. Wait until bidding activity has subdued before placing your bid.

High speed Internet access (ie: dsl, cable, T-1, wireless) is required to bid at live auctions. DO NOT BID if you do not have high speed Internet access. See the support page under internet connection requirements.

Bids are queued by the dvauction.com host computer in the order received. Bid positions are awarded on a first come, first serve basis.

In the event of malfunction by the dvauction.com host computer, it is the Auctioneer's sole discretion to continue or stop the sale

during any internet outages, service disruptions or downtime.

If the malfunction has not affected the sale of lots sold prior to the malfunction, they will be considered sold. Bidding will be open with no bid positions awarded upon resumption of the auction.

It is the buyer's responsibility to ensure that their internet connection and computer are working properly. DVAuction Inc does not guarantee that online services will be uninterrupted. Any malfunction by the buyer's computer or Internet service provider is not the responsibility of DVAuction, Inc.

AUCTION RULES. (BUYERS)

Submission of a bid is a binding offer to purchase livestock, consignment or lot/draft.

A bid is valid until livestock, consignment or lot/draft is sold or auction closes. Submission of a higher bid by another party does not withdraw previous bids.

Auctioneer shall be the sole judge in determining the winning bidder in the event of a tie bid.

It is solely the responsibility of the buyer to verify liens and guarantees.

POLICIES

We are both buyer and seller friendly. Satisfaction of both parties is our measure of success.

A bid is valid until livestock, consignment or lot/draft is sold or auction closes. Submission of a higher bid by another party does not withdraw previous bids.

PAYMENT FOR LIVESTOCK/CONSIGNMENT OR LOT/DRAFT BY PURCHASER

DVAUCTION, INC. IS A BROADCAST & LISTING AGENT ONLY AND DOES NOT ACT AS A LIVESTOCK DEALER, LIVESTOCK MARKET, CLERK, SALE MANAGEMENT OR SELLING AGENT AND IS NOT RESPONSIBLE FOR ANY FINANCIALS OR GUARANTEES. CONTRACT FOR THE SALE IS BETWEEN THE BUYER AND SELLER.

Purchaser may be required to wire the purchase amount to the Seller's bank. Purchasers may be required to provide the Seller with a valid credit card and agree to debit said card for purchase amount.

No Warranties. We provide our service "as is" and without any warranty or condition, express or implied. To the maximum extent permitted by applicable law, we specifically disclaim the implied warranties of title, merchantability and fitness for particular purposes. All warranties expressed or implied are between Buyer and Seller.

Limit of Liability. In no event shall we be liable for lost profits or any special, incidental or consequential damages however arising, including negligence, arising out of or in connection with a sale made through this website.



Will Scott

📱 (409) 728 - 0588

✉️ ssranch@tgsgroup.com

🌐 www.star-s-ranch.com

Human Swart (Ranch Manager)

📱 (409) 728 - 2851

✉️ pswart@tgsgroup.com

🌐 www.star-s-ranch.com

CONTACT DETAILS OF GUEST SELLERS



Colby Stephens

📱 (512) 787 9477

✉️ erin_a_stephens@yahoo.com

🌐 www.facebook.com/solaferanch



Ben Schmidtke

📱 (830) 267 1448

✉️ ben@silverhornranch.com



Doug Dutschmann

📱 (254) 644-3283

✉️ Doug@HatadaRanch.com

🌐 www.HatadaRanch.com



THANK YOU FOR YOUR SUPPORT

☎ (830) 285 – 8753 ✉ ssranch@tgsgroup.com 🌐 www.star-s-ranch.com